

OWNER'S MANUAL

FISH COOLER

Aquarium Cooler

DAEIL DAEIL CO., LTD



Acquired CE certificate

SPECIFICATIONS

Model : ☒ DBA - 075

☐ DBA - 110

☐ DBE - 150

☐ DBE - 200

☐ DBC - 250

Power Supply : 230V 1Ph 50Hz

IC Electronic Temperature Controller

Ozone Friendly Refrigerant (R-134a)





OWNER'S MANUAL

FISH COOLER

Aquarium Cooler

MINI CHILLER FOR AQUARIUM FISH TITANIUM CHILLER

1/10Hp



INLINE SERIES

- No hard plumbing necessary
- Quick installation offered with 3 different size hose connection

IC TEMPERATURE CONTROL SYSTEM

- Digital temperature controller can easily be read day or night

HIGHLY EFFICIENT CONDENSER

- Uses less energy
- Condenser grill located in front for easy maintenance

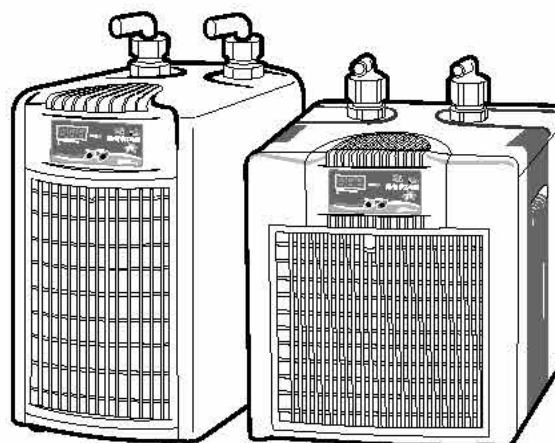


TABLE OF CONTENTS

INLINE SERIES ·	1. Safety	04
SMALL FOOT PRINT ·	1-1. Safety Instructions	05
SUPER QUIET ·	1-2. Data Label	02
ENERGY EFFICIENT ·	2. Introduction	06
DESIGN	3. Receiving and Inspection	06
TITANIUM HEAT ·	4. Installation	06
EXCHANGER	4-1. Installation to Aquarium (or Tank)	07
	4-2. How to Connect Hose	07
	5. Installations for Use	08
	5-1. Start Up	08
	6. Maintenance	09
	6-1. Operations To Be Carried Out Every 6 Months	09
	Table 1 Cooler Specifications	09
	Figure 1 Electrical Diagram	10
	Figure 2 Part Name for Cooler	11
	Figure 3 Exploded View and Part List	12



1. Safety



The coolers are designed and built with safety as a prime consideration; industry-accepted safety factors have been used in the design. Each cooler is checked at the factory for safety and operation. All necessary adjustments are made before shipment.

Follow the maintenance schedules outlined in this manual for good performance and safe operation. Maintenance should be done only by qualified personnel with proper tools.

Carefully read the following safety rules before proceeding with installation, operation or maintenance. The rules are essential to ensure safe cooler operation. Failure to follow these rules void the warranty or results in cooler damage or personal injury.

1. Do not install or try to repair a cooler that has been damaged in shipment. See RECEIVING AND INSPECTION for instructions.
2. Electricity has the potential to cause personal injury or equipment damage. Before doing any work on the cooler, be sure the electrical supply has been locked.
3. Do not operate the cooler at temperature above the maximum conditions(See Table 1).
4. Always supply electrical power that complies with the voltage shown on the data label.
5. Work on the refrigeration system must be done only by a competent refrigeration mechanic.
6. Use only manufacturer's genuine replacement parts. The manufacturer bears no responsibility for hazards caused by the use of unauthorized parts.

1-1. Safety Instructions

Safety instructions in this manual are boldfaced for emphasis. The signal words DANGER, WARNING and CAUTION are used to indicate hazard seriousness levels as follows:



DANGER - Immediate hazard which **WILL** result in severe injury or death.



WARNING - Hazard or unsafe practice which **COULD** result in severe injury or death.

1-2- Data Label

FISH COOLER
Aquarium Cooler

DAEIL

DAEIL CO., LTD
www.coolerheatpump.com

Model	DBA-075	Power Supply	230V 1Ph 50Hz
Compressor	75w	Cooling Capacit	250 kcal/hr
Refrigerant	R-134a	Serial No.	

FISH COOLER
Aquarium Cooler

DAEIL

DAEIL CO., LTD
www.coolerheatpump.com

Model	DBE-200	Power Supply	230V 1Ph 50Hz
Compressor	200w	Cooling Capacit	670 kcal/hr
Refrigerant	R-134a	Serial No.	

FISH COOLER
Aquarium Cooler

DAEIL

DAEIL CO., LTD
www.coolerheatpump.com

Model	DBA-110	Power Supply	230V 1Ph 50Hz
Compressor	110w	Cooling Capacit	370 kcal/hr
Refrigerant	R-134a	Serial No.	

FISH COOLER
Aquarium Cooler

DAEIL

DAEIL CO., LTD
www.coolerheatpump.com

Model	DBC-250	Power Supply	230V 1Ph 50Hz
Compressor	250w	Cooling Capacit	840 kcal/hr
Refrigerant	R-134a	Serial No.	

FISH COOLER
Aquarium Cooler

DAEIL

DAEIL CO., LTD
www.coolerheatpump.com

Model	DBA-150	Power Supply	230V 1Ph 50Hz
Compressor	150w	Cooling Capacit	500 kcal/hr
Refrigerant	R-134a	Serial No.	



2. Introduction

Aquarium Fish Coolers use mechanical refrigeration to cool water in the aquarium. See Table I for rated capacity and other cooler specifications.

Throughout this manual, the word "cooler" is used to refer to Aquarium Fish Coolers. To ensure continuing good performance and safe operation, everyone who installs, uses or maintains the cooler must read and carefully follow the instruction in this manual.

3. Receiving and Inspection

Inspect the cooler closely when it is received. Record any indication of damage on the delivery receipt, especially if the cooler will not be immediately uncrated. Obtain the delivery person's signed agreement to recorded damages to facilitate future insurance claims.

Since the cooler is shipped F.O.B. Factory, the manufacturer's responsibility for the shipment ceases when the carrier signs the bill of lading.

If goods are received short or damaged condition, notify the carrier and insist on a notation of the loss or damage across the face of the freight bill. Otherwise no claim can be enforced against the carrier.

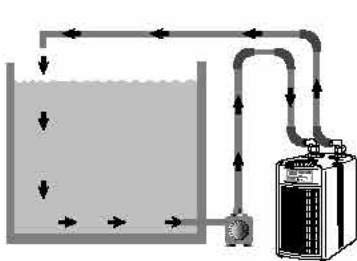
If concealed loss or damage is discovered, notify your carrier at once and request an inspection. This is absolutely necessary. Unless you do this, the carrier will not consider any claim for loss or damage. The carrier will make an inspection and may grant a concealed damage notation. If you give the carrier a clear receipt for the goods that have been damaged or lost in transit, you do so at your own risk and expense.

The manufacturer is willing to assist you in collecting claims for loss or damage. Willingness does not make the manufacturer responsible for collecting claims or replacing material. Claim filing and processing is your responsibility.

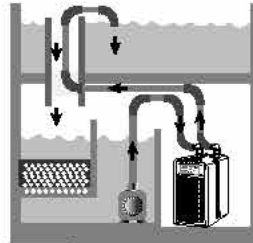
4. Installation

Place the cooler in a ventilated place and away from sources of heat, taking care that the evacuation holes, indispensable for taking in air, are not less than 1 ft from any obstacle.

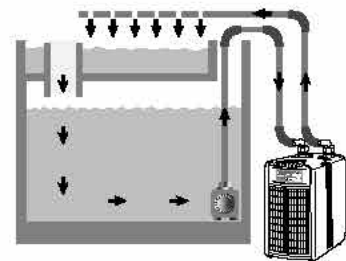
4.1 Installation to Aquarium (or Tank)



1. Connection of outside circulation pump



2. Connection of circulation pump in the filter



3. Connection of inside circulation pump

4.2 How to Connect Hose

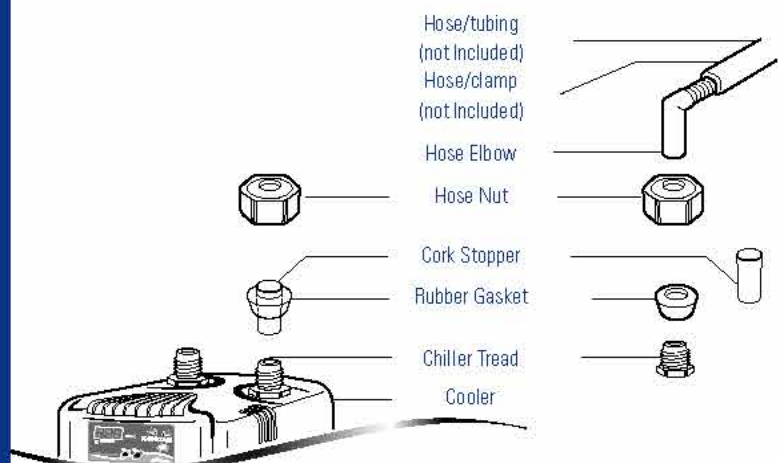
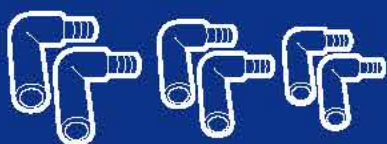
1. Method of connecting hose to cooler

1. Unscrew hose nut and remove rubber gasket
2. Pull out cork stopper (not needed to run cooler)-Discard
3. Insert hose elbow into hose nut.
4. Insert hose elbow into rubber tighten.
5. Screw onto cooler and hand tighten.
6. Connect rubber tubing over threaded portion of hose elbow.
7. Fasten hose clamp to secure hold.

2. Checking equipment connection

Checking connections between parts

Hose Elbow
Large 3/4" 2PCS
Me-dium 5/8" 2PCS
Small 1/2" 2PCS



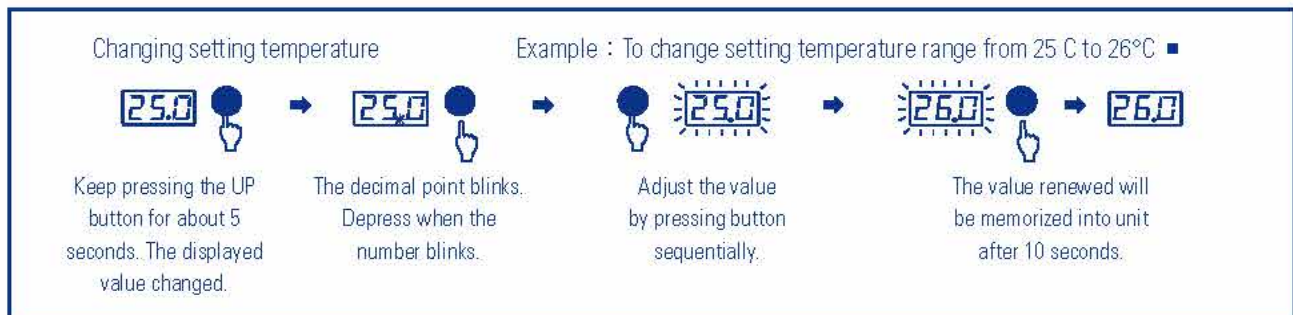


5. Installations for Use

5.1 Start Up

- 1) Once all connections are made, circulate water through chiller before turning on the unit.
- 2) Check all connections for leaks.
- 3) Verify electricity rating, and then plug power cord into a dedicated electrical outlet.
- 4) This unit has been factory-set at 25°C.
- 5) The Digital Display will read the current water temperature.
- 6) The light indicator will begin to blink.
- 7) Chiller will automatically turn on within 3 minutes.
- 8) Your chiller has now been activated.

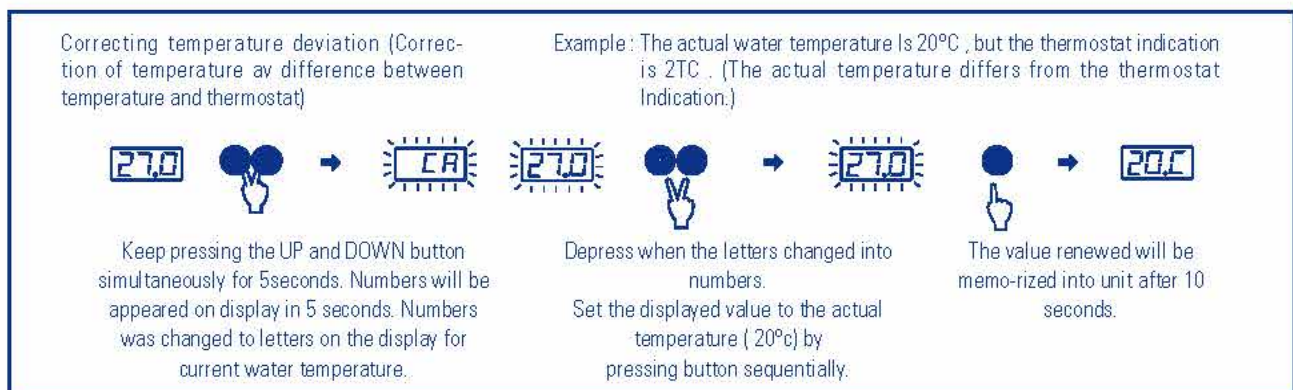
* This unit contains an Auto Digital Temperature Control System. This built-in thermostat will turn itself on/off within +/- 1°C according to the desired set temperature.



* Error representation

The thermostat has self-diagnostic function, so the letters below will be appeared on display if error occurs.

HI	HI Indicating that the temperature being raised above the specified range. Over-temperature.
LO	LO Indicating that the temperature lowered below the specified range. Under-temperature.
Er1	Er1 Indicating that there is an error occurred in the thermostat itself.



6. Maintenance

WARNING

Carry out maintenance operations with the cooler turned off and disconnected from the mains.

6.1 Operations To Be Carried Out Every 6 Months

- Cleaning of the condenser

Take off the suction grille and clean the ribbed condenser with a vacuum cleaner or jet of air.

- Cleaning of the heat exchanger

To eliminate deposits of impurities, bacteria or metabolic products not captured by the filter, periodic cleaning of the heat exchanger should be carried out, using clean water which should be made to circulate in the opposite direction to the flow when operating.

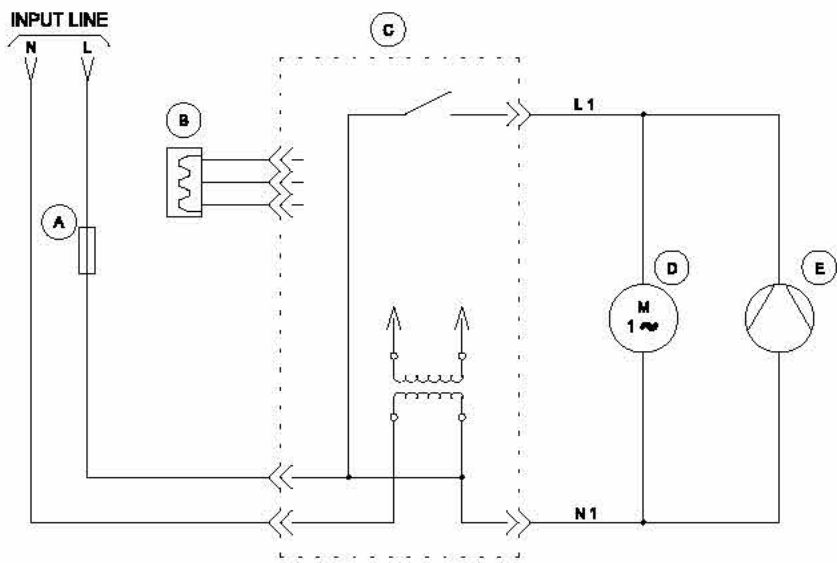
Table 1 - Cooler Specifications

MODEL	POWER SUPPLY	COMPRESSOR	COOLING CAPACITY	REFRIGERANT TYPE
DBA-075	230V/1Ph/50Hz	75W	250 kcal/hr	Ozone Friendly/R-134a
DBA-110	230V/1Ph/50Hz	110W	370 kcal/hr	Ozone Friendly/R-134a
DBE-150	230V/1Ph/50Hz	150W	500 kcal/hr	Ozone Friendly/R-134a
DBE-200	230V/1Ph/50Hz	200W	670 kcal/hr	Ozone Friendly/R-134a
DBC-250	230V/1Ph/50Hz	250W	840 kcal/hr	Ozone Friendly/R-134a



Figure 1 - Electrical Diagram

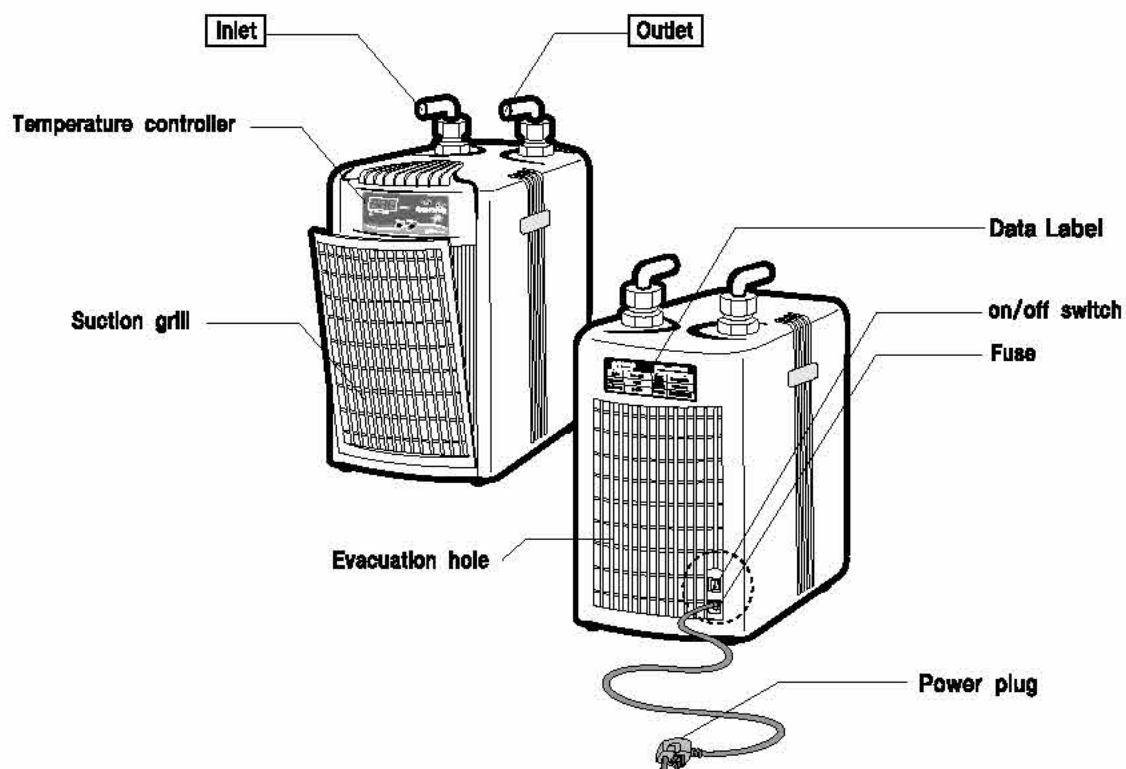
MODEL : DBA-075 / DBA-110 / DBE-150 / DBE-200 / DBC-250



NO	DESCRIPTION	
A	Fuse	
B	Thermostat probe	
C	Thermostat (Temp. Controller)	
D	Fan motor	
E	Compressor motor	
-		
WIRE		
PHASE	COLOR	REMARK
L	BLUE	16AWG
N	BROWN	16AWG
L 1	WHITE	16AWG
N 1	BROWN	16AWG

Figure 2 - Part Name for Cooler

● **MODEL : DBA-075 / DBA-110 / DBE-150 / DBE-200**



● **Temperature controller**

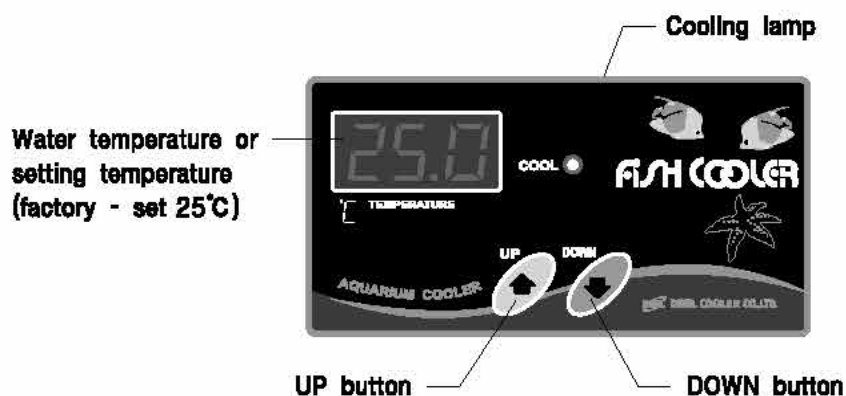
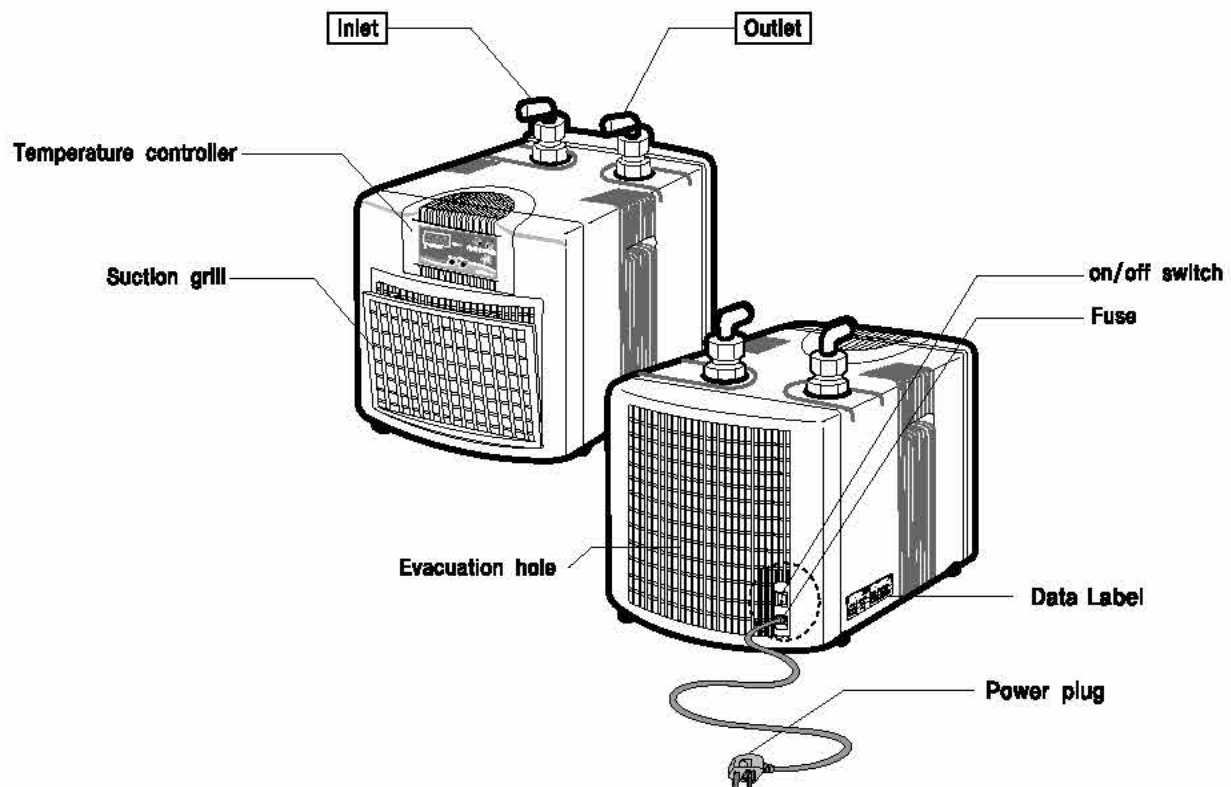




Figure 2 - Part Name for Cooler

● **MODEL : DBC-250**



● **Temperature controller**

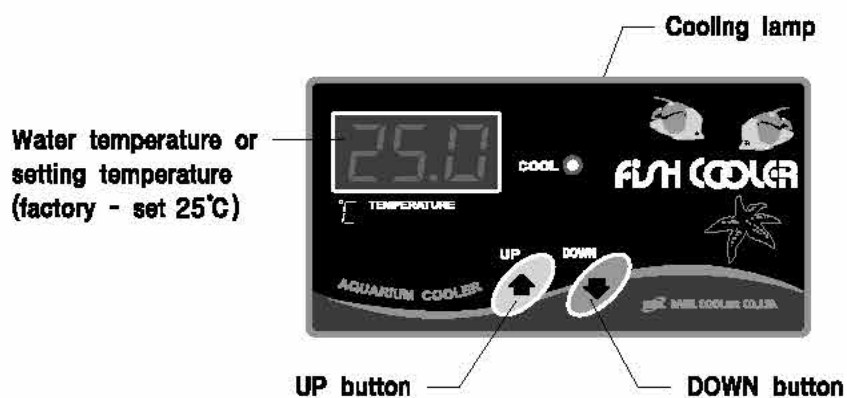


Figure 3 - Exploded View and Part Name

● MODEL : DBA-075 / DBA-110 / DBE-150

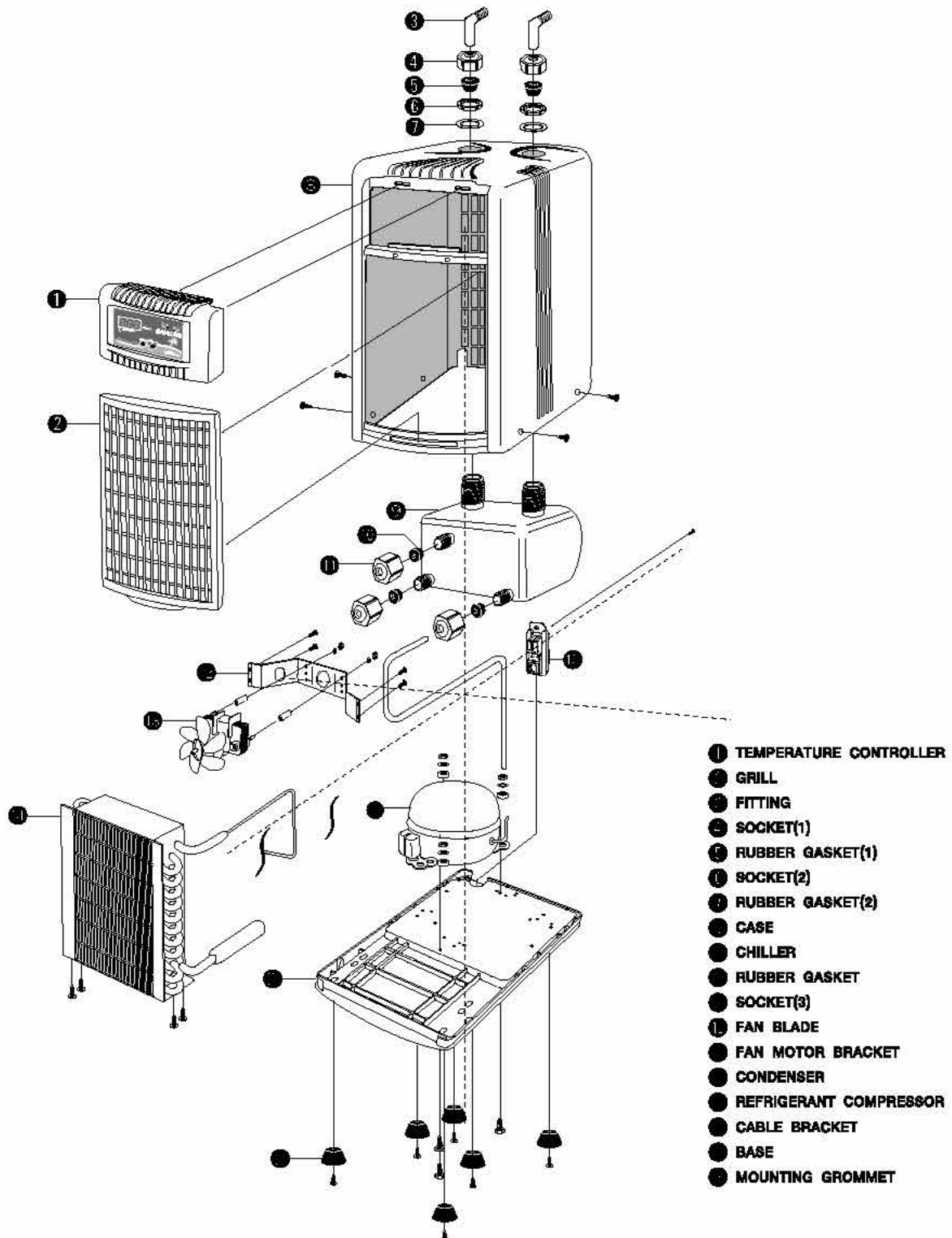




Figure 3 - Exploded View and Part Name

● **MODEL : DBE-200**

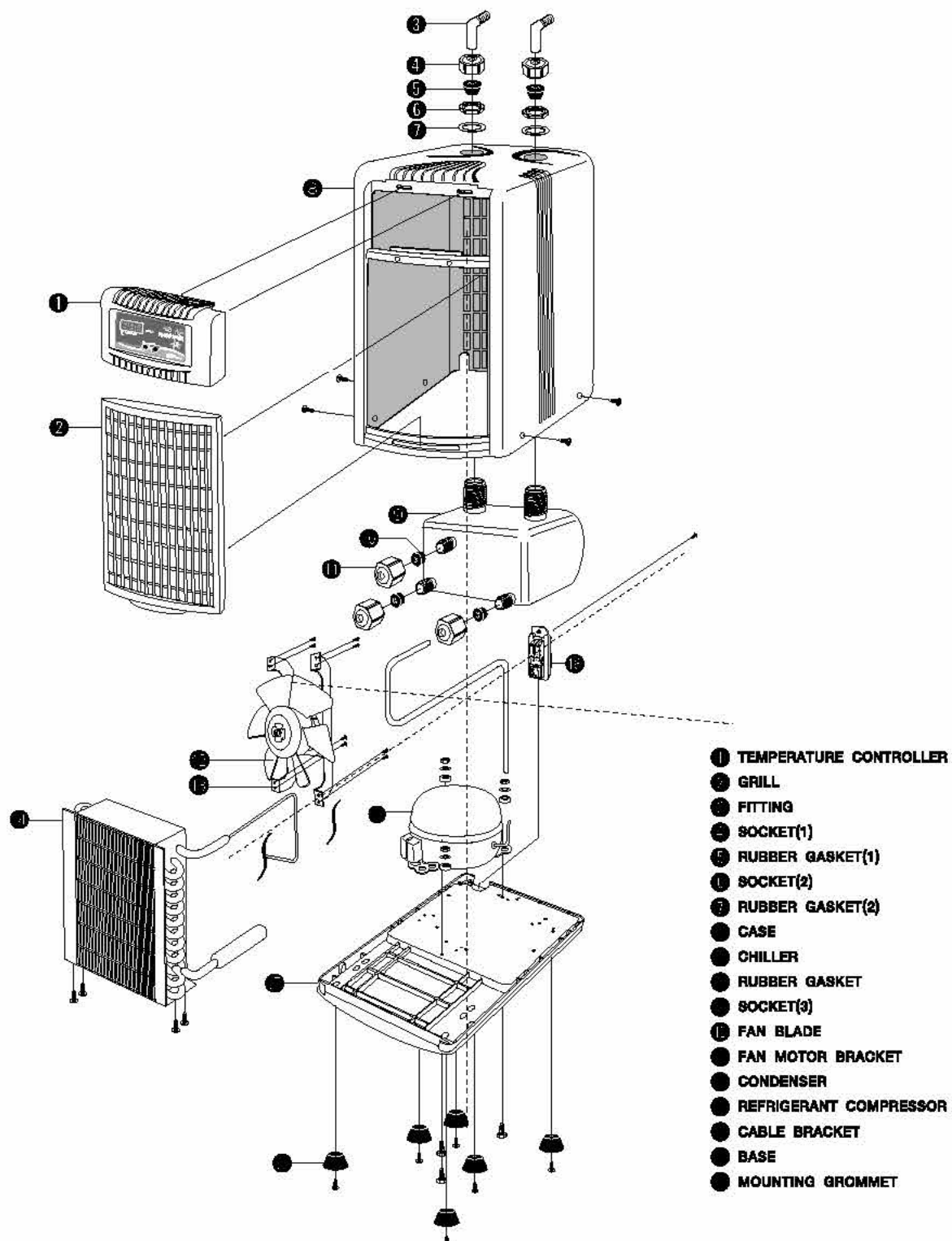
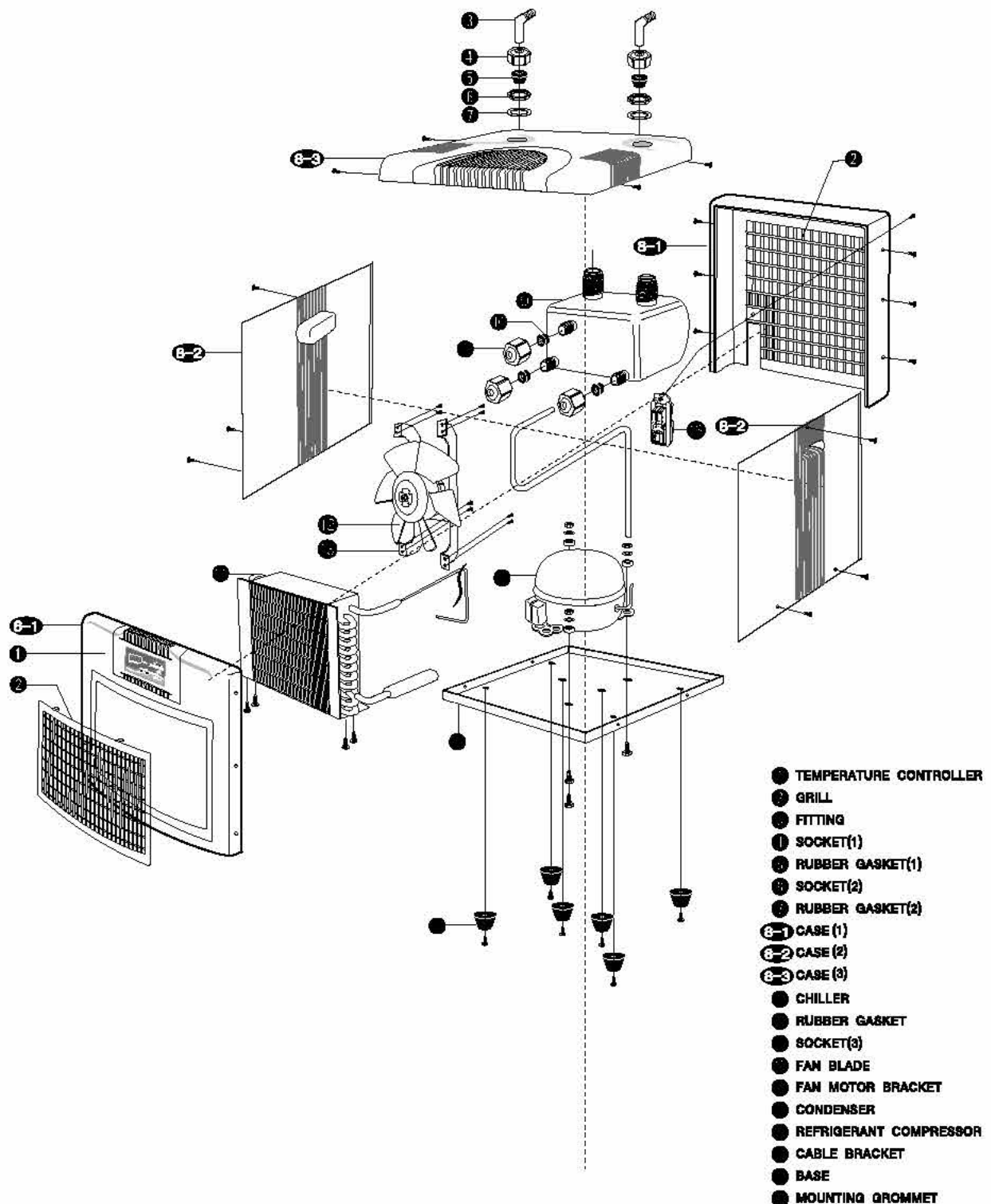


Figure 3 - Exploded View and Part Name

● MODEL : DBC-250



OWNER'S MANUAL



Aquarium Cooler

www.coolernheatpump.com



Head Office

99, Sandan 4-ro, Jeonggwan-eup, Gijang-gun, Busan, Republic of Korea

Tel. +82-51-730-8500 Fax. +82-51-731-2013

Central Region Branch

21, Jangjeol-ro, Gwangmyeong-si, Gyeonggi-do, Republic of Korea

Tel. +82-2-2066-1641~2 Fax. +82-2-2066-1643

Gwangju Branch

26, Pungenm-ro 11beon-gil, Seo-gu, Gwangju, Republic of Korea

Tel. +82-62-681-3136 Fax. +82-62-681-3137